

# Callisto- $\mu$ <sup>TM</sup>

## Broadcast specification 3-input asynchronous miniature switcher

A fully-featured low-cost compact SDI switcher for use in environments where space and weight are at a premium.



A compact portable SDI switcher with web server capability and many features of the Callisto-P.

- Full specification 270Mbit SDI 3-input video switcher with 10-bit digital precision throughout
- Simultaneous programme and preview SDI and analogue composite outputs
- Adjustable auto dissolve and fade to black
- Three asynchronous SDI inputs with individual frame stores
- Industry-standard RS-422 remote control and GPI I/O
- Four auxillary SDI reclocked monitoring outputs
- Internal test generator
- Composite input and web browser options
- Compact size and low weight
- Low power consumption

# The Callisto Micro SDI switcher

Callisto Micro is a broadcast specification (SMPTE-259M) 270Mbit video switcher designed for applications where space and weight are at a premium. Callisto Micro can handle fully asynchronous (unlocked) inputs in a mixed signal format (SDI and analogue) environment.

The programme and preview outputs are available as both SDI and analogue composite with 10-bit processing throughout. There are four SDI auxiliary switched outputs offering access to the reclocked inputs and the programme output. The incoming sources can be asynchronous as the Micro features triple channel framestore synchronisers, allowing cuts to be made on the programme bus without delay or frame freeze. The switcher will operate in stand-alone mode, or may be genlocked to an external reference. A line store (minimum delay) mode is also available via the set-up menu for working with genlocked sources.

Operationally, Callisto Micro works in conventional programme/preview bus mode. Installed functions include auto wipe (multiple patterns with normal/reverse, colour border and soft edge), auto dissolve, and auto fade to black. Callisto is dual standard 525/625 and offers 4:3 or 16:9 (letterbox) blanking. The extensive menus allow the user to tailor the operational modes to suit individual requirements. An internal TSG provides EBU bars and other test signals.

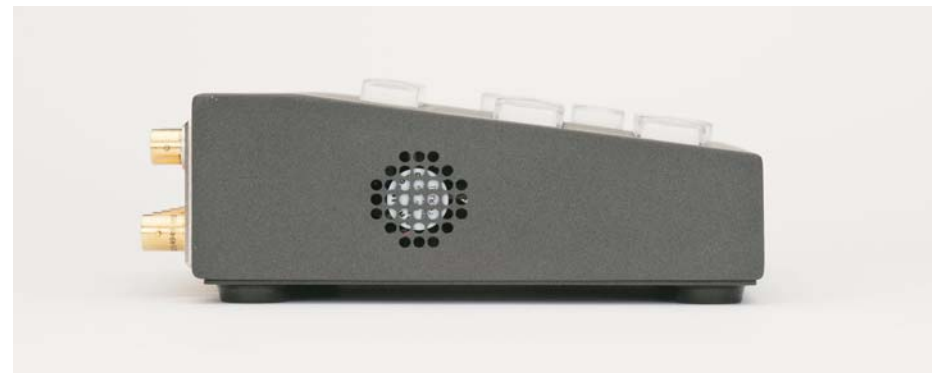
Callisto Micro also features a web server option with external browser control and input 3 has an analogue input option. Callisto can be controlled via industry standard editor protocols, and has a full complement of assignable (take/ftb/source select) GPI functions and GPI outputs.

## Callisto Micro Specifications

Inputs	<ul style="list-style-type: none"><li>• 270Mbit SDI component x 3</li><li>• Optional analogue composite x 1</li><li>• Genlock composite</li></ul>
Outputs	<ul style="list-style-type: none"><li>• Programme SDI and composite</li><li>• Preview SDI and composite</li><li>• 4 auxiliary SDI reclocked monitoring outputs (inputs 1/2/3 programme)</li></ul>
Ancillary features	<ul style="list-style-type: none"><li>• GPI inputs x 3; GPI/Tally outputs x 3</li><li>• RS-422 GVG-100 &amp; Sony editor protocols</li><li>• Optional web server and RJ-45 Ethernet</li></ul>
Dimensions	196mm (7.7") wide x 140mm (5.5") deep x 32mm (1.3") at front rising to 47mm (1.85") at rear
Weight	1.2kg (2.5lbs)
Power requirements	12V @ 13W (universal power supply included)



Callisto Micro: Rear view



Callisto Micro: Side view

As part of its policy of product improvement, Brick House Video Ltd. reserves the right to change these specifications without notice.